

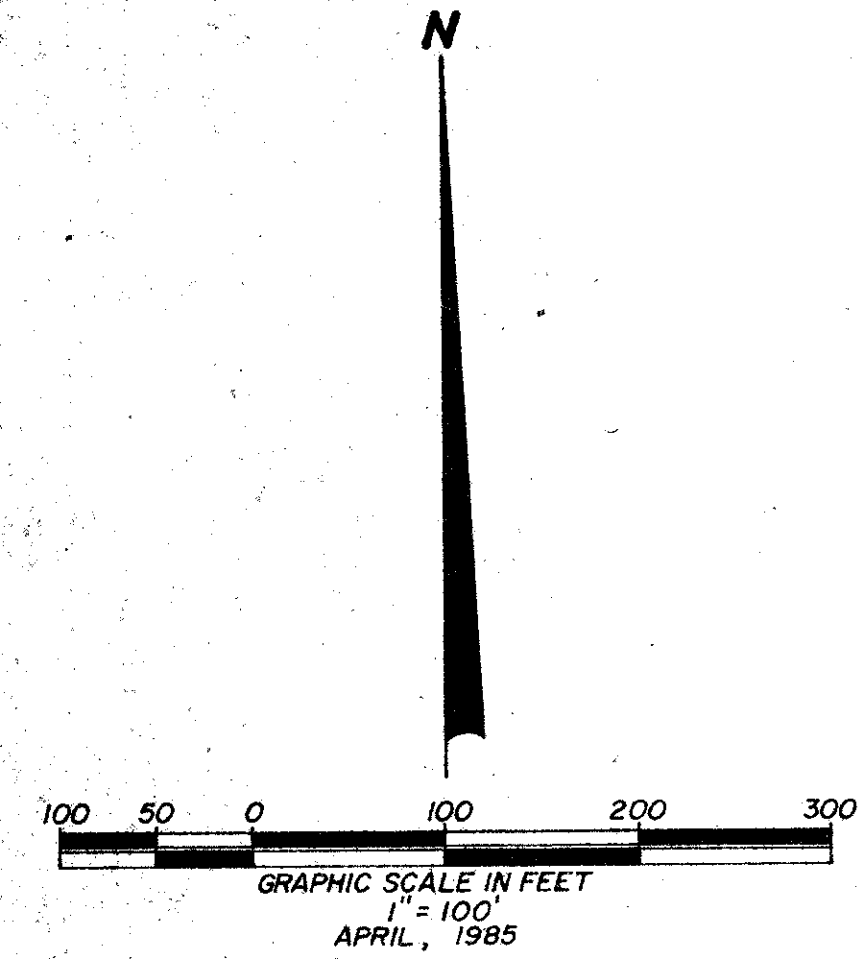
53/163

HUNTINGTON LAKES SECTION FOUR

A PART OF VILLAGE OF ORIOLE, A P.U.D.
BEING A REPLAT OF A PORTION OF TRACTS 'B' & 'C' PLAT No. 1 VILLAGES OF ORIOLE (P.B. 30, PG. 38, 39 & 40, P.B.C.R.)
SECTIONS 15 & 16, TOWNSHIP 46 SOUTH, RANGE 42 EAST
PALM BEACH COUNTY, FLORIDA

Prepared By:
CRAIG A. SMITH & ASSOCIATES
CONSULTING ENGINEERS & SURVEYORS
1000 WEST McNAB ROAD
POMPANO BEACH, FLORIDA
By: FREDERICK E. CONROD, III, P.L.S. # 2816

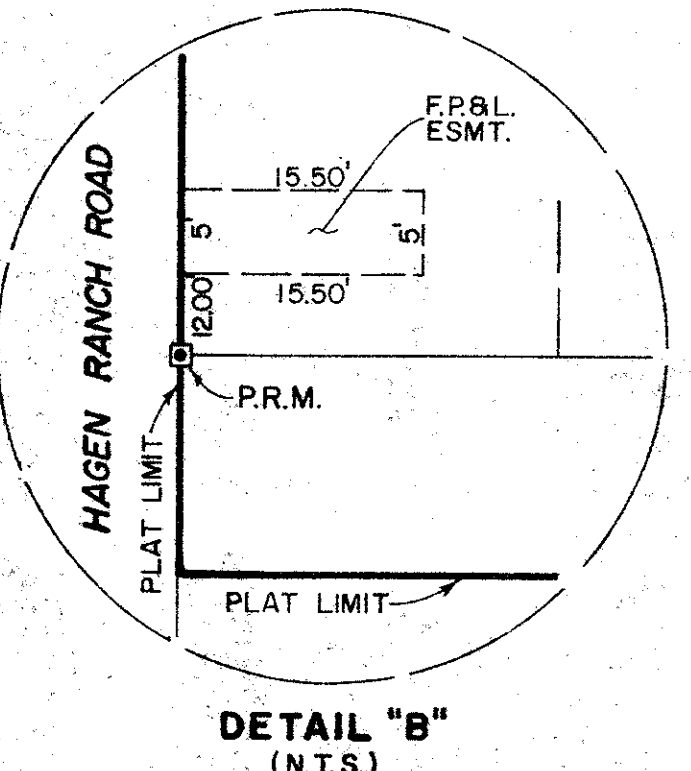
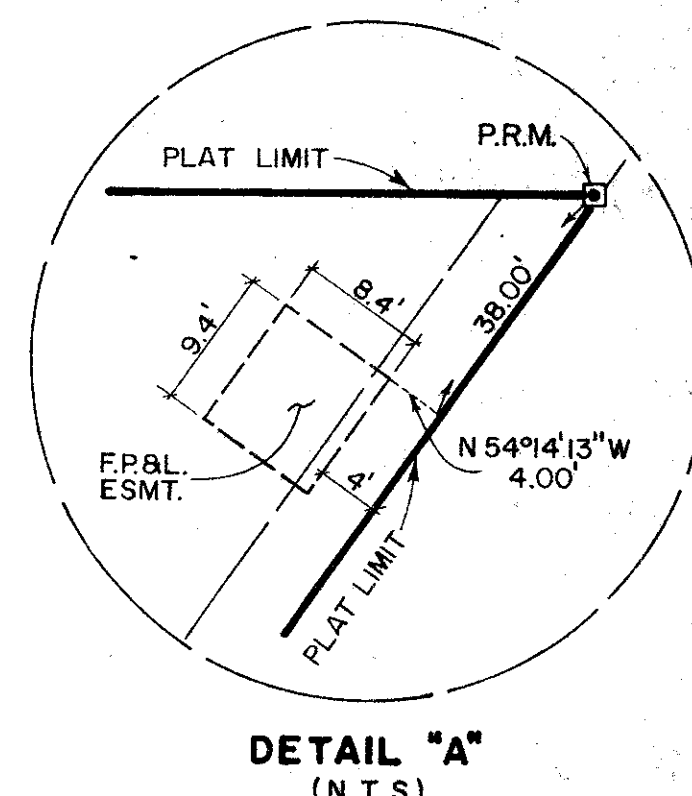
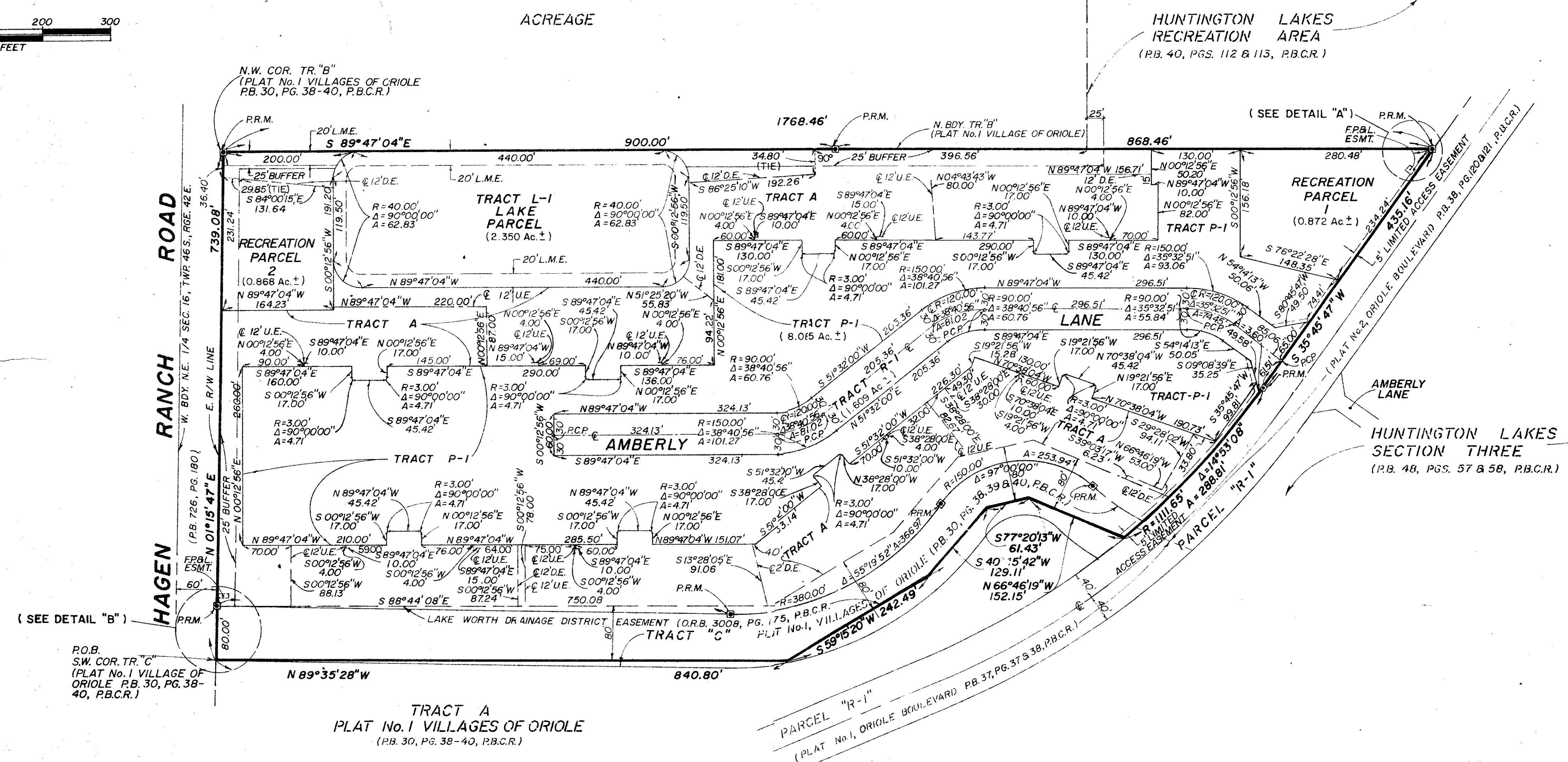
STATE OF FLORIDA S.S.
COUNTY OF PALM BEACH
THIS PLAT WAS FILED FOR
RECORD AT _____ THIS
DAY OF _____, 1985, A.D.,
AND DULY RECORDED IN PLAT BOOK
No. _____ ON PAGES _____
AND
JOHN B. DUNKLE, CLERK
BY: _____, D.C.



DRAWING NUMBER

DRAWING NUMBER

DRAWING NUMBER



- NOTES**
1. P.R.M. INDICATES PERMANENT REFERENCE MONUMENT.
 2. BEARINGS SHOWN HEREON ARE BASED ON THE PLAT OF HUNTINGTON LAKES SECTION THREE (P.B. 48, PG. 57 & 58, P.B.C.R.).
 3. U.E. INDICATES UTILITY EASEMENT.
 4. D.E. INDICATES DRAINAGE EASEMENT.
 5. L.M.E. INDICATES LAKE MAINTENANCE EASEMENT.
 6. NO BUILDINGS OR ANY KIND OF CONSTRUCTION SHALL BE PLACED ON UTILITY OR DRAINAGE EASEMENTS.
 7. NO STRUCTURES, TREES OR SHRUBS SHALL BE PLACED ON DRAINAGE EASEMENTS.
 8. APPROVAL OF LANDSCAPING ON UTILITY EASEMENTS OTHER THAN WATER OR SEWER SHALL BE ONLY WITH APPROVAL OF ALL UTILITIES OCCUPYING SAME.
 9. WHERE UTILITY EASEMENTS AND DRAINAGE EASEMENTS CROSS, DRAINAGE SHALL TAKE PRECEDENCE.
 10. P.C.P. INDICATES PERMANENT CONTROL POINT.

0326-300 53/163
HUNTINGTON LAKES #4